



Executives Association of Long Beach

[HOME](#)
[ABOUT US](#)
[MEMBERS](#)
[JOIN](#)
[SPEED LEADS](#)
[RIPTIDE](#)
[CALENDAR](#)
[CONTACT US](#)

RIPTIDE

December 5, 2016

LEADS:

0 Inside Leads
0 Outside Leads
0 Yelp Reviews

ATTENDANCE:

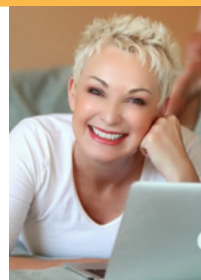
56 Firms are currently members of Long Beach Execs
40 Firms were present at today's meeting

NEXT MEETING:

Date: Monday, December 12, 2016
Location: The Grand
Program Company: HD Orthodontics
Program Member: Dr. Heather Desh

MEMBER FOCUS TALK

Marni Spencer-Devlin
Passion 4 Profit
250 Pacific, Long Beach
Phone:
Email: marnispencerdevlin@gmail.com
Website: www.passion4profitinc.com



On Monday, December 5th at The Grand Event Center at noon, the Executives Association of Long Beach networking group listened to new member Marni Spencer-Devlin of Passion4Profit give a presentation on her classification of Business Consulting.

Marni offers 3 main services:

- Executive Coaching
- Marketing Communications
- Employee Engagement

First you need to LOVE what you do. Marni will help you find your passion again and then help you turn it into a profitable business with better communication. She says "People don't want your stuff" and through her coaching she can help you solve needs for people so they will buy.

Questions to consider:

What is your blind spot?

What's your unique contribution?

What are your company ideals?

What steps will you take to accomplish your goals?

Are your employees engaged? If not, how can you get them engaged in what they do?

Not sure what the answers are? Hire Marni for one hour or twenty and



December 12, 2016
Membership
Showcase 5:30pm -
7:30pm

Evening Mixer Hosted by
New Member Heather Desh
at HD Orthodontics

December 19, 2016
Holiday Gift Exchange
Luncheon at the Grand
(Bring a Gift ~\$25 value)

December 19, 2016
Board Meeting

Board Meeting at The
Grand Following Lunch
December 26, 2016

DARK - Merry Christmas!

January 2, 2017

DARK - Happy New Year!

January 9, 2016

Kris Gragson, GK Media

January 9,

2016 Board Meeting

Board Meeting at the Grand
After Lunch

Riptide Archives

December 5, 2016
November 28, 2016
November 14, 2016
November 7, 2016
October 31, 2016
October 24, 2016
October 17, 2016
October 3, 2016
September 26, 2016
September 19, 2016
September 12, 2016
August 29, 2016
August 22, 2016
August 15, 2016
August 8, 2016
August 1, 2016
July 25, 2016
July 18, 2016
July 12, 2016
June 27, 2016
June 20, 2016
June 13, 2016
June 6, 2016
May 23, 2016

get yourself some clarity.

A good referral for Marni is any business that is struggling and complains often about frustrations about communication with their customers or employees.

After Marni's talk we introduced new members Kimberly Rodgers of Jungle Promotions and Heather Desh of HD Orthodontics. We also welcomed new associate members Esmond Duong of Digital Installers and Dan D'sa of The Grand Events.

Due to the numerous questions for Marni and the introductions there wasn't time for a lead session.

Yelp Reviews Count as a Lead

Yelp profile links are dominating search engine results. Don't get left behind. Claim your business page and start writing reviews of other businesses today!

<https://www.yelp.com/yelpmobile>

Consider reviewing the Executives Association this week:

<http://www.yelp.com/biz/executives-association-of-long-beach-long-beach?osq=ealb>

ANNOUNCEMENTS

Rememer to invite guests to keep our membership continually growing!

1st Classification Postings:

n/a

2nd Classification Postings:

n/a

Membership Postings:

n/a

Welcome New Members:

Kimberly Rodgers of Jungle Promotions | Classification: Promotional Products

Associate Member Esmond Duong for Rusty Deeble, Digital Installers | Home/Commercial Entertainment Installation

Associate Member Dan D'Sa for Jim Choura, The Grand | Events

Heather Desh, HD Orthodontics | Classification: Orthodontist

Marni Spencer-Devlin, Passion4Profit | Classification: Business Consulting

Dr. Ting-Wey Yen, Beach Heights Dentistry | Classification: General Dentistry

Instant Signs Cypress, Classification: Sign Printer

Shelley Iniguez: Executive Member | Dan Schoepf: Associate Member

Other Membership News:

Dr. Russel Chang is resigning but has asked Heather Desh to fill his vacant classification.

Dr. Lynn Fasnacht of Beach Heights Dentistry has resigned. Dr. Yen will become the Executive Member.

Recently Opened Classifications:

Computer Services

Pest Control

Videographer

ADVERTISEMENTS/WANT ADS

- May 16, 2016
- May 9, 2016
- May 2, 2016
- April 25, 2016
- April 18, 2016
- April 11, 2016
- April 4, 2016
- March 28, 2016
- March 14, 2016
- March 7, 2016
- February 29, 2016
- February 22, 2016
- February 15, 2016
- February 8, 2016
- February 1, 2016
- January 25, 2016
- January 11, 2016
- January 4, 2016
- December 14, 2015
- December 7, 2015
- November 23, 2015
- November 16, 2015
- November 9, 2015
- October 26, 2015
- October 19, 2015
- October 5, 2015
- September 28, 2015
- September 21, 2015
- September 14, 2015
- September 7, 2015
- August 31, 2015
- August 24, 2015
- August 17, 2015
- August 10, 2015
- August 3, 2015
- July 27, 2015
- July 20, 2015
- July 13, 2015
- June 29, 2015
- June 22, 2015
- June 8, 2015
- June 1, 2015
- May 18, 2015
- May 11, 2015
- May 4, 2015
- April 27, 2015
- April 20, 2015
- April 6, 2015
- March 30, 2015
- March 23, 2015
- March 16, 2015
- March 9, 2015
- February 23, 2015
- February 2, 2015
- January 26, 2015
- January 12, 2015
- January 5, 2015

PGA West La Quinta Condo. Call Jim Nesmith for details (562) 900-2230.

Traveling? Call Pat Ellington for toady's hot deals.

BOARD MEETING AT A GLANCE

© Copyright Long Beach Executives Association 2016, All Rights Reserved. Webmaster: Knightling Inc.